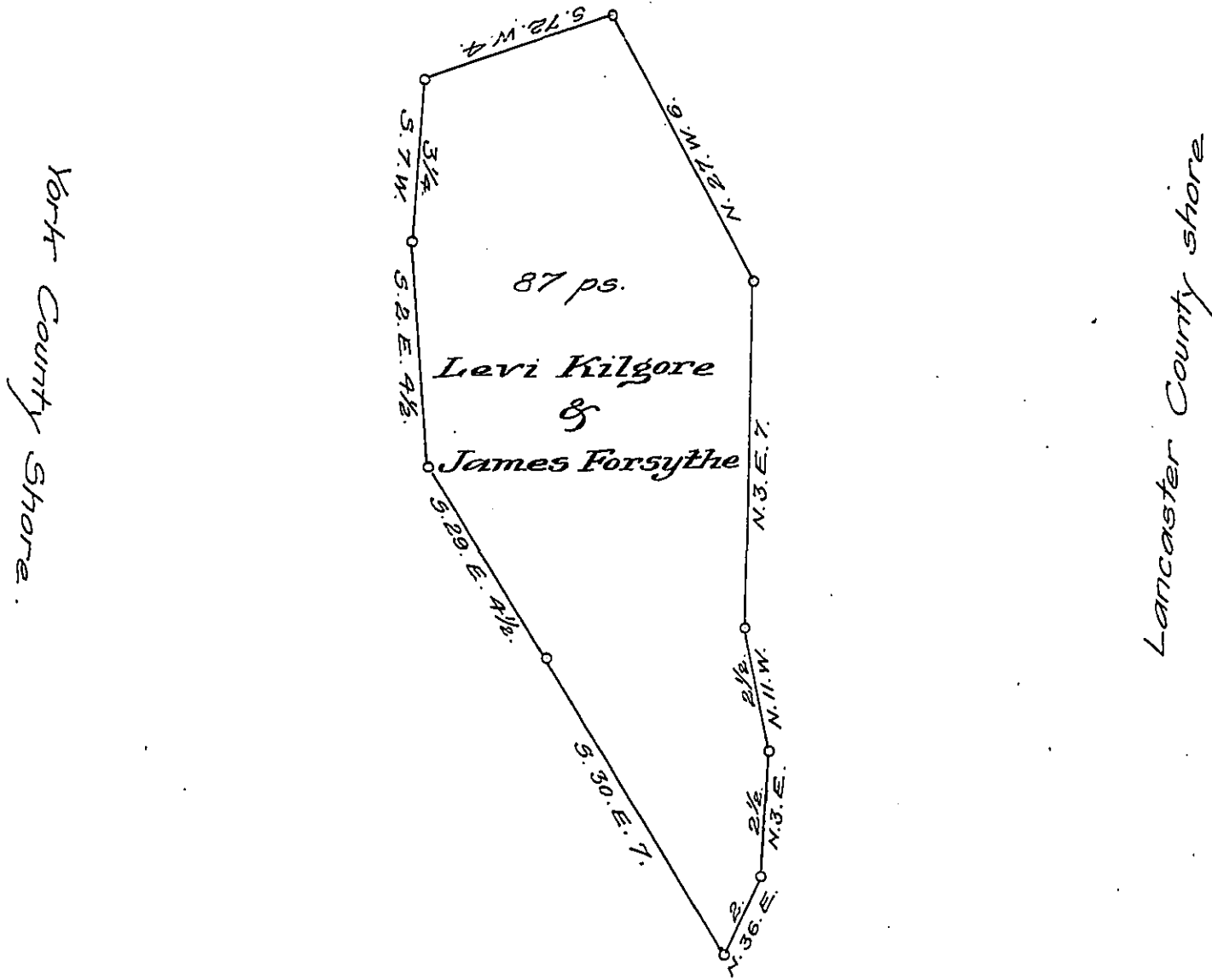


X



A Draught of an Island situate in the river Susquehanna in Drumore township Lancaster Called \_\_\_\_\_  
 Opposite to land of \_\_\_\_\_ Smith on the Lancaster side and about one hundred yards East of Herra's Island Containing Eighty seven perches Strict Measure surveyed in pursuance of a Warrant dated the 14<sup>th</sup> day of August A.D. 1818 Granted to Levi Kilgore & James Forsythe

p<sup>c</sup> Jacob Hibshman D.S.

To Jacob Spangler Esq. }  
 Surveyor General. }

IN TESTIMONY that the above is a copy of the original remaining on file in the Department of Internal Affairs of Pennsylvania, made conformably to an Act of Assembly approved the 16th day of February 1833, I have hereunto set my hand and caused the Seal of said Department to be affixed at Harrisburg, this twenty first day of January 1908.

*Henry Hoover*

Secretary of Internal Affairs.